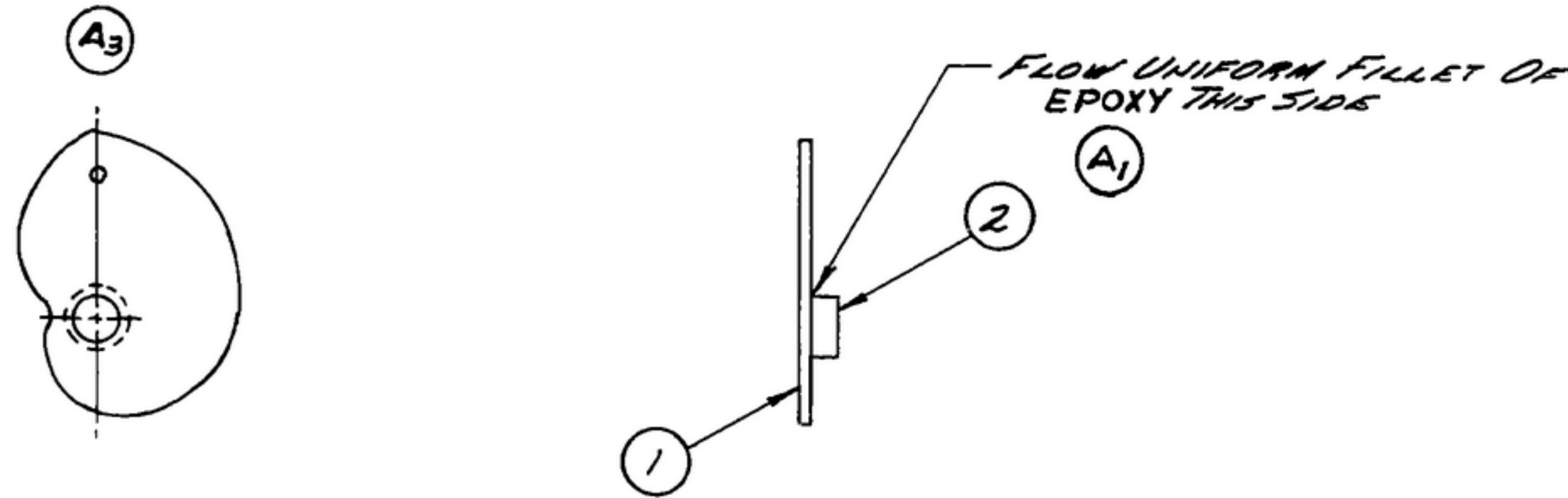


NOTICE: WHEN GOVERNMENT DRAWINGS, SPECIFICATIONS, OR OTHER DATA ARE USED FOR ANY PURPOSE OTHER THAN IN CONNECTION WITH A SPECIFICALLY RELATED GOVERNMENT PROCUREMENT OPERATION, THE UNITED STATES GOVERNMENT THEREBY ASSUMES NO RESPONSIBILITY FOR ANY OBLIGATION WHATSOEVER AND THE FACT THAT THE GOVERNMENT MAY HAVE FORMULATED, PROVIDED, OR IN ANY WAY SUPPLIED THE SAID DRAWINGS, SPECIFICATIONS, OR OTHER DATA IS NOT TO BE REGARDED BY REPLICATION OR OTHERWISE AS IN ANY MANNER LICENSING THE HOLDER OR ANY OTHER PERSON OR CORPORATION, OR CONFERRING ANY RIGHTS OR PERMISSIONS TO REPRODUCE, TRANSMIT, USE, OR SELL ANY PATENTED INVENTION THAT MAY IN ANY WAY BE RELATED THERETO.

THIS DOCUMENT HAS BEEN PURCHASED BY THE GOVERNMENT AND MAY BE REPRODUCED AND USED IN ANY MANNER WITH ANY GOVERNMENT PROCUREMENT OR MAINTENANCE OPERATION.

FOR INFORMATION ONLY. CONTRACTOR MAY AT HIS OPTION DEVIATE FROM THESE PROCESS DETAILS.

* SWE APPROVAL		REVISIONS			
SYM	PR10042-5	SYM	DESCRIPTION	DATE	APPROVAL
		A7	A1 - EPOXY WAS SOLDER. A2 - REMOVED DATA TABLE. A3 - REMOVED DE GREEDIM. FROM VIEW; A4 - NOTE 2 CONTAINED COMPLETE SOLDER SPEC. INFORMATION AND FLUX SUPPLIER DATA. A5 - REMOVED NOTE 4 (CAM DIM. DATA) A6 - SWE PART NO. COLUMN WAS COLLINS PART NO'S. A7 - ITEM 1 WAS SM-B-283274	9 OCT. 59	42428-PC-59-AI-51 REV'D. PME
I3	CA84781	B3	B1 - WAS IIP205114 B2 - WAS IIP205113 B3 - WAS IIP205112	17 MAY 60	42428-PC-59 REV'D. PME
C	CA85078	C	(1) - ADDED NOTE #4	22 FEB. 61	42428-PC-59 REV'D. PME



NOTES:

1. PRESS HUB (2) IN CAM (1) SNUG AGAINST SHOULDER & BOND WITH EPOXY AS SHOWN.
2. BOND WITH EPOXY CONSISTING OF EPON 828 (SHELL CHEMICAL CO. CHICAGO, ILL., OR EQUAL CURING AGENT BF3-400 HARSHAW CHEMICAL CO. CLEVELAND, OHIO OR EQUAL) AND HEAVY GRADE TITANIUM DIOXIDE (TITANIUM PIGMENT CORP., NATIONAL LEAD CO. N.Y., N.Y. OR EQUAL.)
3. CAM MUST WITHSTAND 6 FT. LBS. TORQUE WITHOUT AN EPOXY JOINT FAILURE.
4. REAM I.D. OF HUB TO .2492 ± .0002 DIA. AFTER ASS'Y.

SWE PART NO.	ITEM	REQD	PART NO.	DESCRIPTION	MATL	MATL SPEC
B1	20P205114	5	AS REQ'D	FILLER		2
B2	20P205113	4	AS REQ'D	ACTIVATOR		2
B3	20P205112	3	AS REQ'D	EPOXY		2
A7		2	SM-B-283270	HUB-CAM		
A7		1	SM-D-178928	CAM		
A6	SWE PART NO.					

558 0308 002	1	SM-C-248959																						
558 0307 002	1	SM-B-248958																						
558 0306 002	1	SM-B-248957																						
558 0305 002	1	SM-B-248956																						
558 0304 002	1	SM-B-248955	XL-248775																					
COLLINS NO.		QTY	NEXT ASSY	USED ON	APPLICATION		DRAWN HENRY		CHECKED <i>th</i>	APPROVED	COLLINS RADIO CO. CEDAR RAPIDS, IOWA 14214 - P.H. 51-93		SIGNAL CORPS		REVIEWED PME		APPROVED HLY PME		DATE 28 Dec 55		SCALE 1/1	DEPARTMENT OF THE ARMY SIGNAL CORPS ENGINEERING LABORATORIES FORT MONMOUTH NEW JERSEY		SM-C-248971